

Legend

- Community Boundary
- Tax Parcel Boundary
- LIRR Right of Way

Annotation

- 4444

Block Number
- 4444

Lot Number
- COMMUNITY

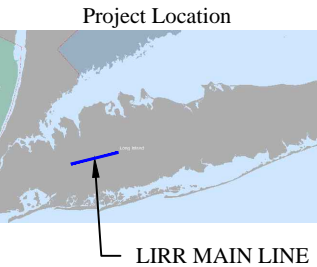
Community Name

Long Island Rail Road

LIRR Expansion Project From
Floral Park to Hicksville

Legend Sheet

August 25, 2016





Long Island Rail Road

LIRR Expansion Project From
Floral Park to Hicksville

Floral Park and Bellerose
Village

Sheet 1 of 20

August 25, 2016

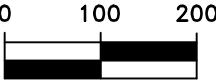
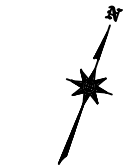


ENLARGED AREA



Source:
Aerial Photography - flown in April 2016 -
bandwidth of 500' on either side of the Long
Island Rail Road. Merged with New York State
Digital Orthoimagery Program flown in 2013

Parcels - Nassau County Department of
Assessment and Nassau County GIS



SCALE: 1"=200'



LIRR Expansion Project From Floral Park to Hicksville

Floral Park and New Hyde Park

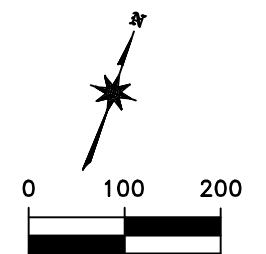
August 25, 2016

**AECOM**

KSE
KS ENGINEERS, P.C.

Source:
Aerial Photography - flown in April 2016 -
bandwidth of 500' on either side of the Long
Island Rail Road. Merged with New York State
Digital Orthoimagery Program flown in 2013

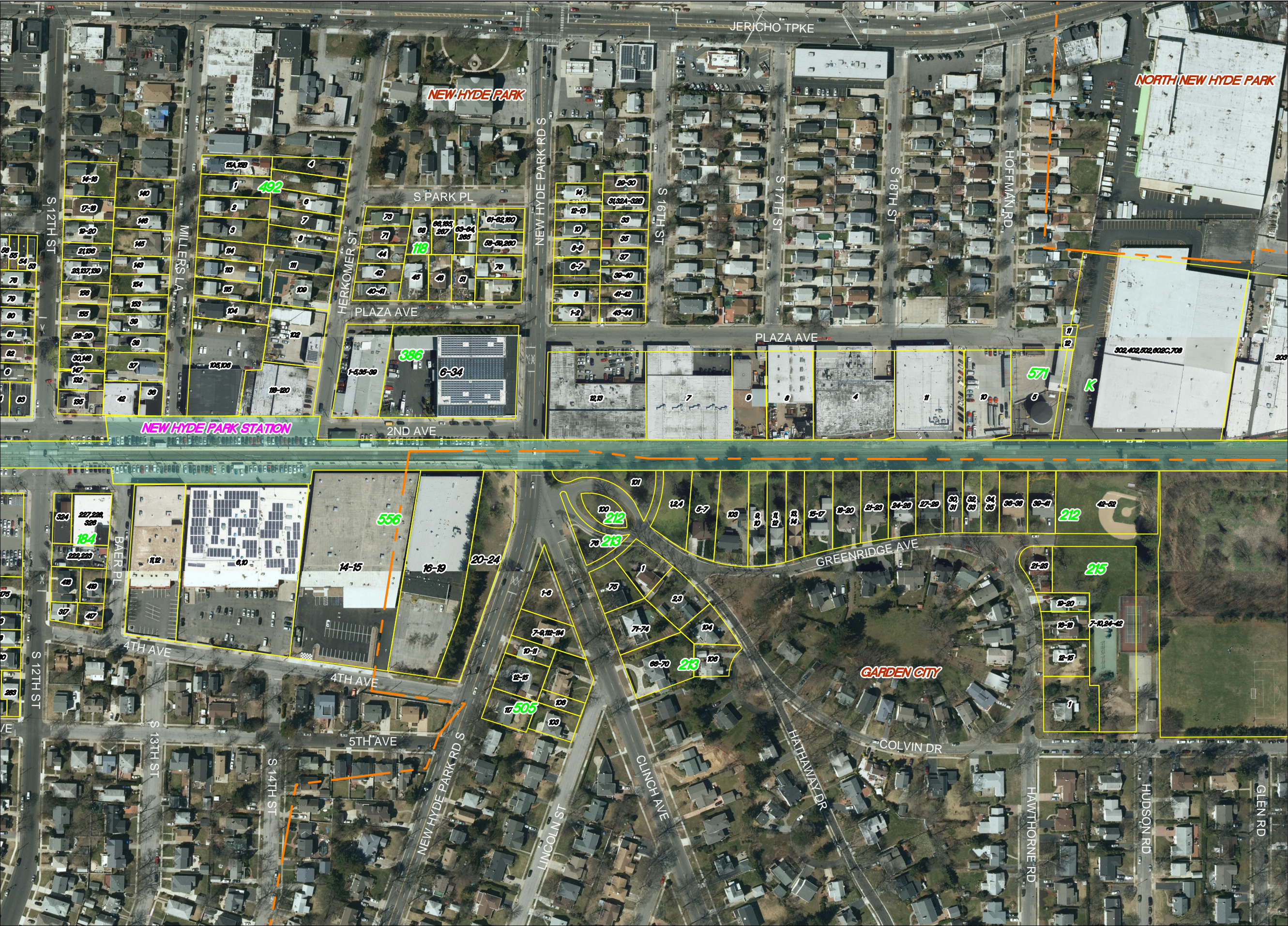
Parcels - Nassau County Department of
Assessment and Nassau County GIS



SCALE: 1"=200'







Long Island Rail Road

LIRR Expansion Project From
Floral Park to Hicksville

New Hyde Park, North New
Hyde Park and Garden City

Sheet 4 of 20

August 25, 2016

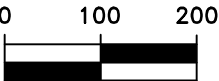
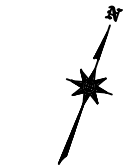


ENLARGED AREA



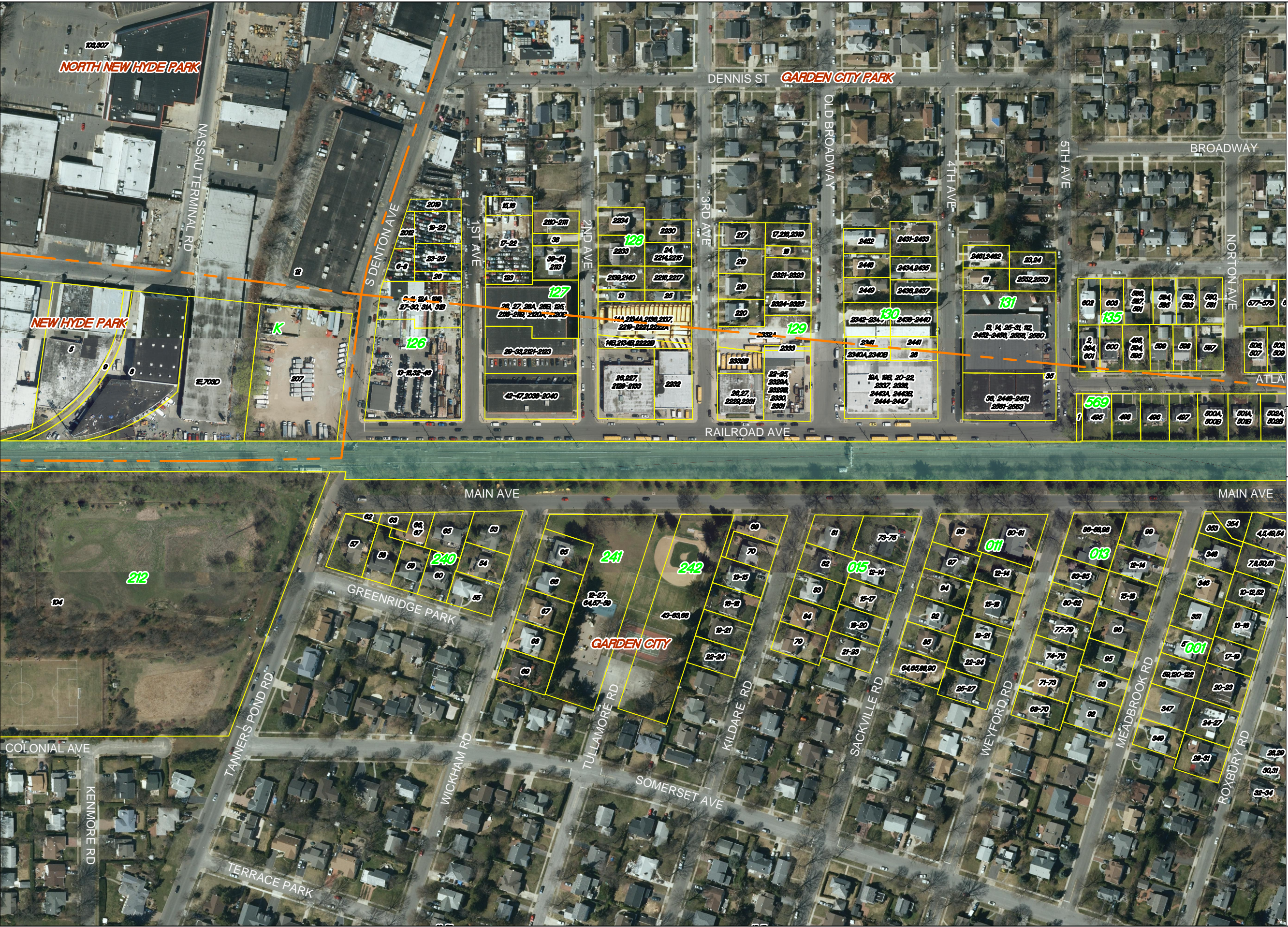
Source:
Aerial Photography - flown in April 2016 -
bandwidth of 500' on either side of the Long
Island Rail Road. Merged with New York State
Digital Orthoimagery Program flown in 2013

Parcels - Nassau County Department of
Assessment and Nassau County GIS



SCALE: 1"=200'





Long Island Rail Road

LIRR Expansion Project From
Floral Park to Hicksville

Garden City, New Hyde Park,
North New Hyde Park and
Garden City Park

Sheet 5 of 20

August 25, 2016

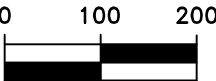
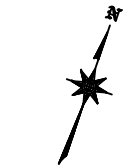


ENLARGED AREA



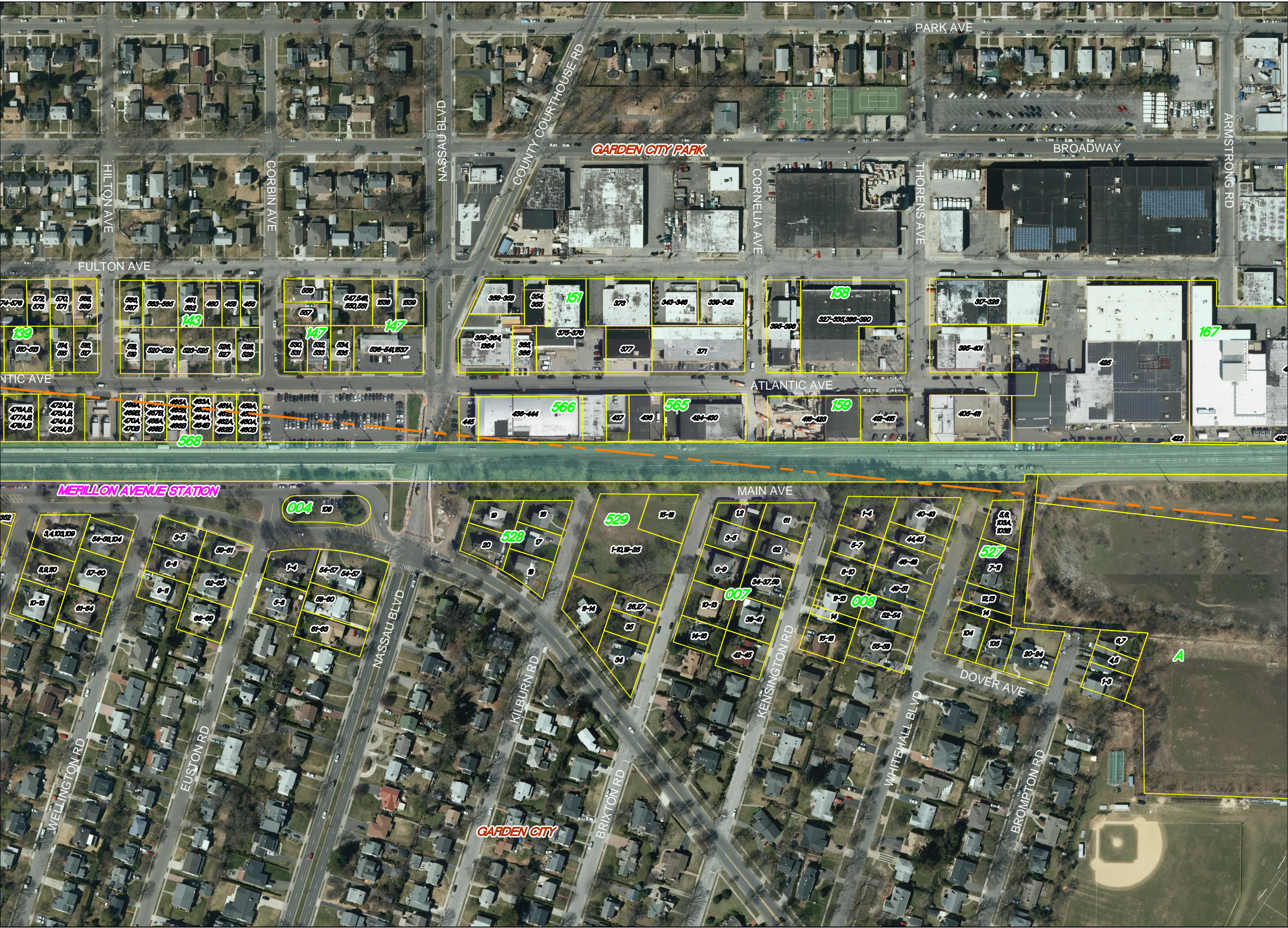
Source:
Aerial Photography - flown in April 2016 -
bandwidth of 500' on either side of the Long
Island Rail Road. Merged with New York State
Digital Orthoimagery Program flown in 2013

Parcels - Nassau County Department of
Assessment and Nassau County GIS



SCALE: 1"=200'





Long Island Rail Road

LIRR Expansion Project From
Floral Park to Hicksville

Garden City and Garden City
Park

Sheet 6 of 20

August 25, 2016

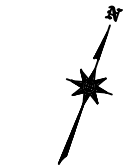


ENLARGED AREA



Source:
Aerial Photography - flown in April 2016 -
bandwidth of 500' on either side of the Long
Island Rail Road. Merged with New York State
Digital Orthoimagery Program flown in 2013

Parcels - Nassau County Department of
Assessment and Nassau County GIS



SCALE: 1"=200'





Long Island Rail Road

LIRR Expansion Project From
Floral Park to Hicksville

Garden City, Mineola and
Garden City Park

Sheet 7 of 20

August 25, 2016



ENLARGED AREA

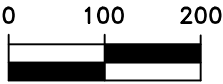
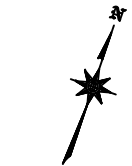


AECOM

KSE
KS ENGINEERS, P.C.

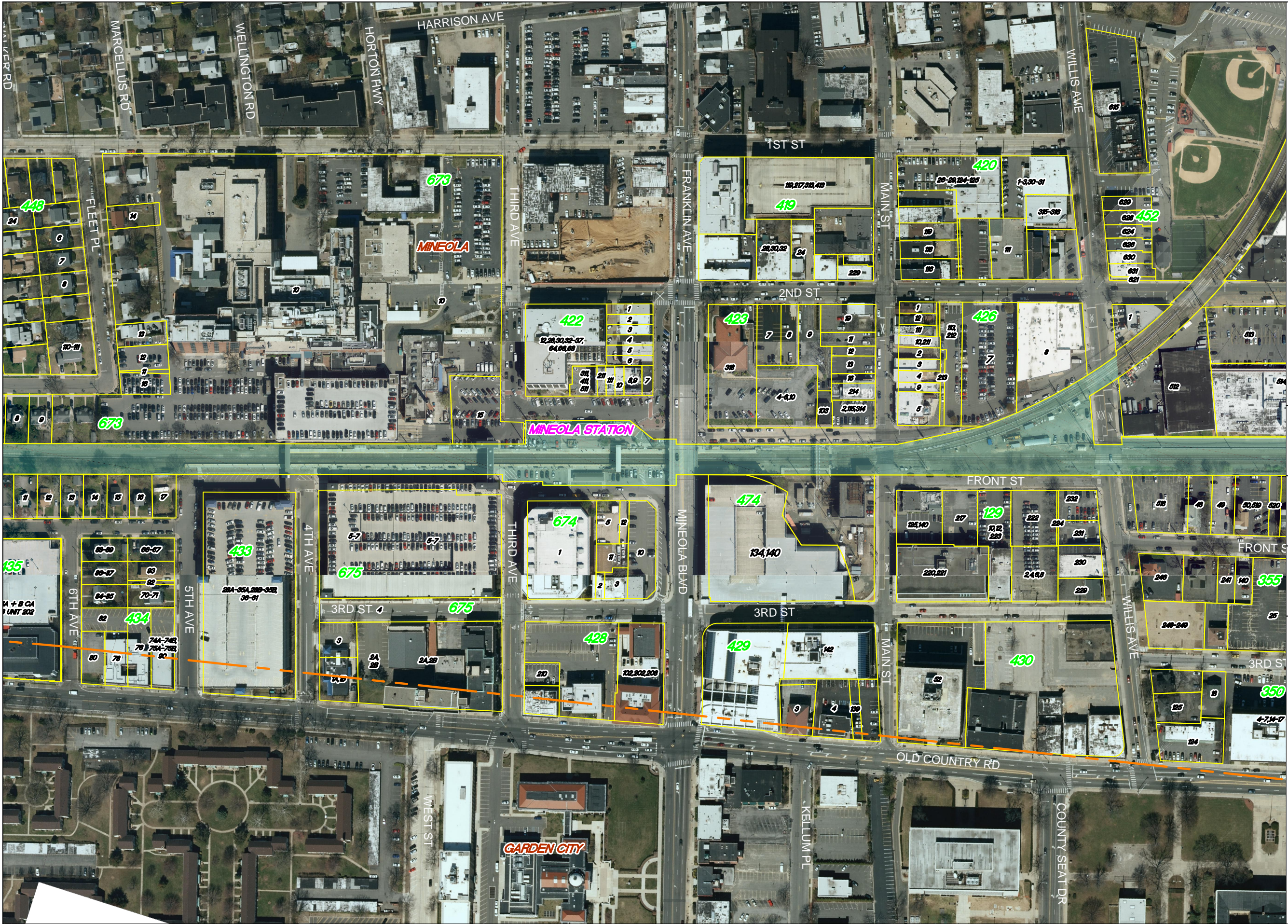
Source:
Aerial Photography - flown in April 2016 -
bandwidth of 500' on either side of the Long
Island Rail Road. Merged with New York State
Digital Orthoimagery Program flown in 2013

Parcels - Nassau County Department of
Assessment and Nassau County GIS



SCALE: 1"=200'





Long Island Rail Road

LIRR Expansion Project From
Floral Park to Hicksville

Mineola and Garden City

Sheet 8 of 20

August 25, 2016



ENLARGED AREA



AECOM

KSE
KS ENGINEERS, P.C.

Source:
Aerial Photography - flown in April 2016 -
bandwidth of 500' on either side of the Long
Island Rail Road. Merged with New York State
Digital Orthoimagery Program flown in 2013

Parcels - Nassau County Department of
Assessment and Nassau County GIS



0 100 200



SCALE: 1"=200'





Long Island Rail Road

LIRR Expansion Project From
Floral Park to Hicksville

Carle Place

Sheet 11 of 20

August 25, 2016

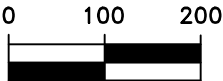
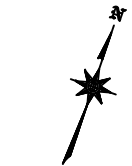


ENLARGED AREA



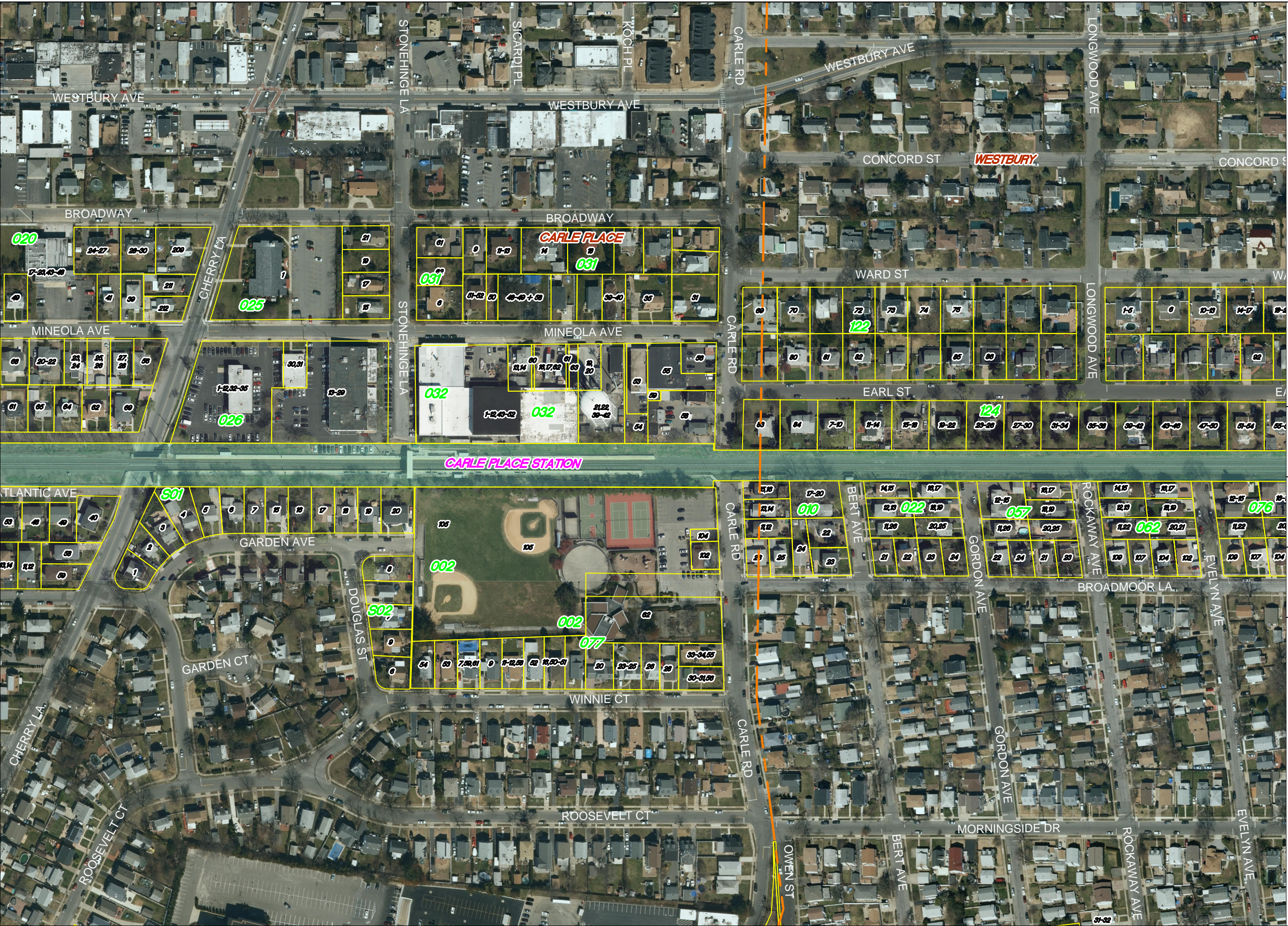
Source:
Aerial Photography - flown in April 2016 -
bandwidth of 500' on either side of the Long
Island Rail Road. Merged with New York State
Digital Orthoimagery Program flown in 2013

Parcels - Nassau County Department of
Assessment and Nassau County GIS



SCALE: 1"=200'

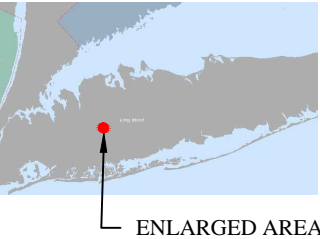




Long Island Rail Road

LIRR Expansion Project From
Floral Park to Hicksville
Carle Place and Westbury

Sheet 12 of 20
August 25, 2016

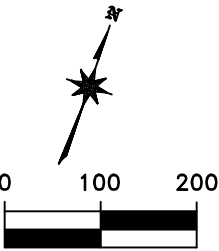


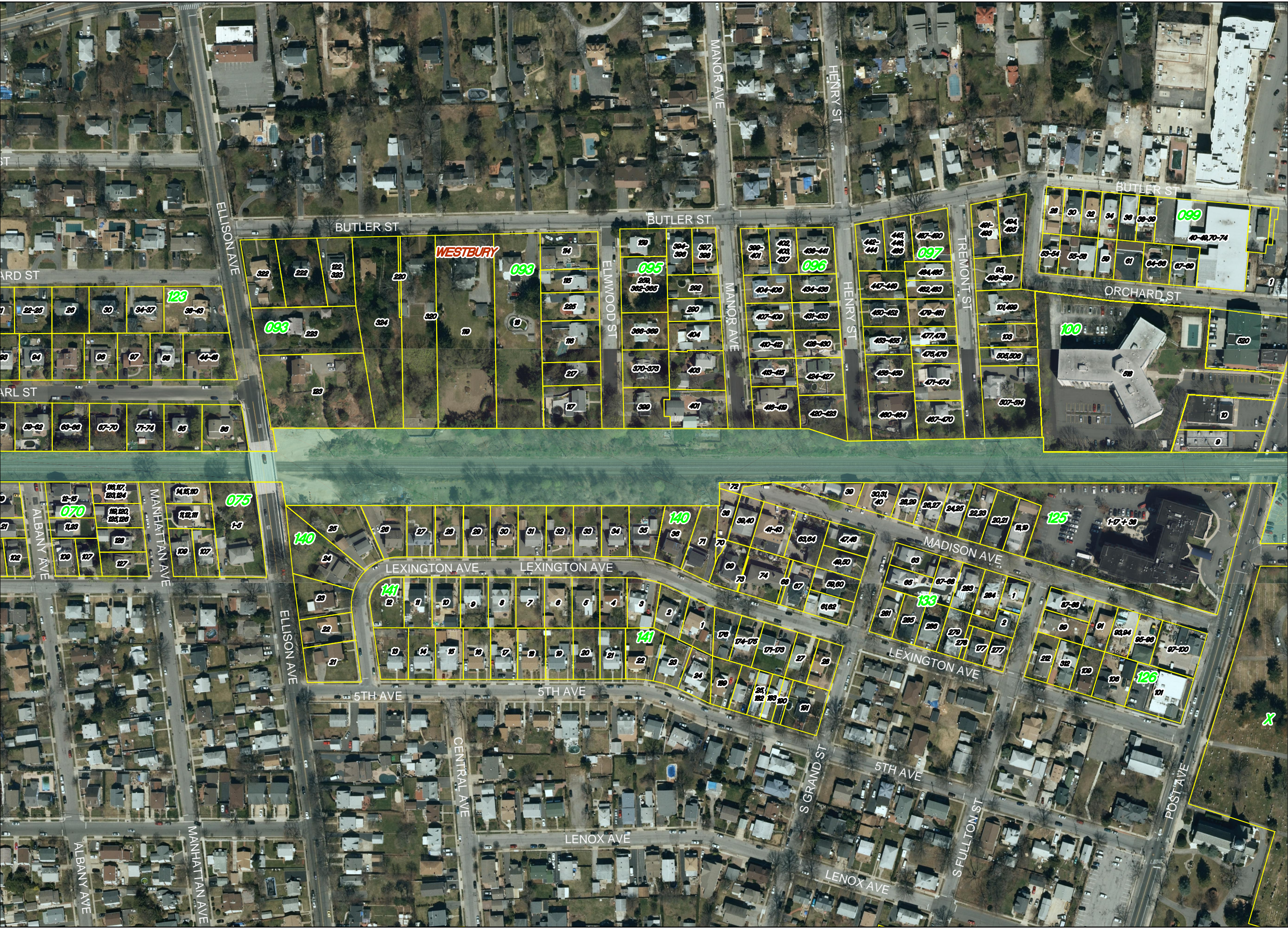
AECOM

KSE
KS ENGINEERS, P.C.

Source:
Aerial Photography - flown in April 2016 -
bandwidth of 500' on either side of the Long
Island Rail Road. Merged with New York State
Digital Orthoimagery Program flown in 2013

Parcels - Nassau County Department of
Assessment and Nassau County GIS





Long Island Rail Road

LIRR Expansion Project From
Floral Park to Hicksville

Westbury

Sheet 13 of 20

August 25, 2016



ENLARGED AREA

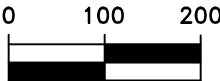
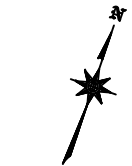


AECOM

KSE
KS ENGINEERS, P.C.

Source:
Aerial Photography - flown in April 2016 -
bandwidth of 500' on either side of the Long
Island Rail Road. Merged with New York State
Digital Orthoimagery Program flown in 2013

Parcels - Nassau County Department of
Assessment and Nassau County GIS



SCALE: 1"=200'





Long Island Rail Road

LIRR Expansion Project From
Floral Park to Hicksville

Westbury and New Cassel

Sheet 14 of 20

August 25, 2016

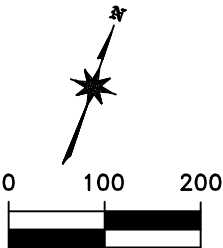


ENLARGED AREA



Source:
Aerial Photography - flown in April 2016 -
bandwidth of 500' on either side of the Long
Island Rail Road. Merged with New York State
Digital Orthoimagery Program flown in 2013

Parcels - Nassau County Department of
Assessment and Nassau County GIS



SCALE: 1"=200'



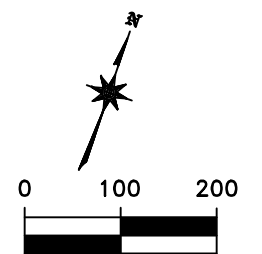
A map of the study area showing the location of Long Beach, CA. The map includes the Pacific Ocean to the west, the San Francisco Bay Area to the north, and the Long Beach area to the south. A red dot marks the location of Long Beach, CA, with a black arrow pointing to it from the label 'Long Beach, CA'.

**AECOM**

KSE
KS ENGINEERS, P.C.

Source:
Aerial Photography - flown in April 2016 -
bandwidth of 500' on either side of the Long
Island Rail Road. Merged with New York State
Digital Orthoimagery Program flown in 2013

Parcels - Nassau County Department of
Assessment and Nassau County GIS



SCALE: 1"=200'





Long Island Rail Road

LIRR Expansion Project From
Floral Park to Hicksville

New Cassel

Sheet 16 of 20

August 25, 2016



ENLARGED AREA



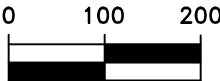
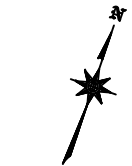
AECOM

KSE

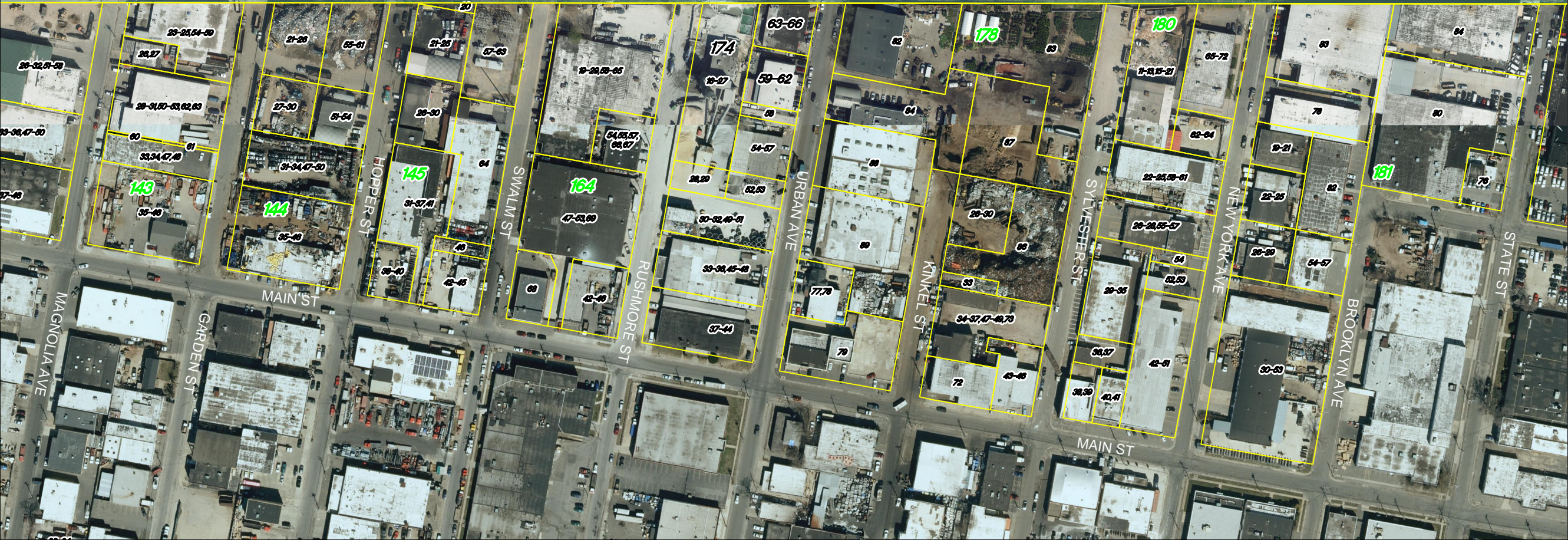
KS ENGINEERS, P.C.

Source:
Aerial Photography - flown in April 2016 -
bandwidth of 500' on either side of the Long
Island Rail Road. Merged with New York State
Digital Orthoimagery Program flown in 2013

Parcels - Nassau County Department of
Assessment and Nassau County GIS



SCALE: 1"=200'





Long Island Rail Road

LIRR Expansion Project From
Floral Park to Hicksville

New Cassel and Hicksville

Sheet 17 of 20

August 25, 2016

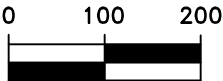
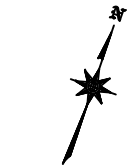


ENLARGED AREA



Source:
Aerial Photography - flown in April 2016 -
bandwidth of 500' on either side of the Long
Island Rail Road. Merged with New York State
Digital Orthoimagery Program flown in 2013

Parcels - Nassau County Department of
Assessment and Nassau County GIS



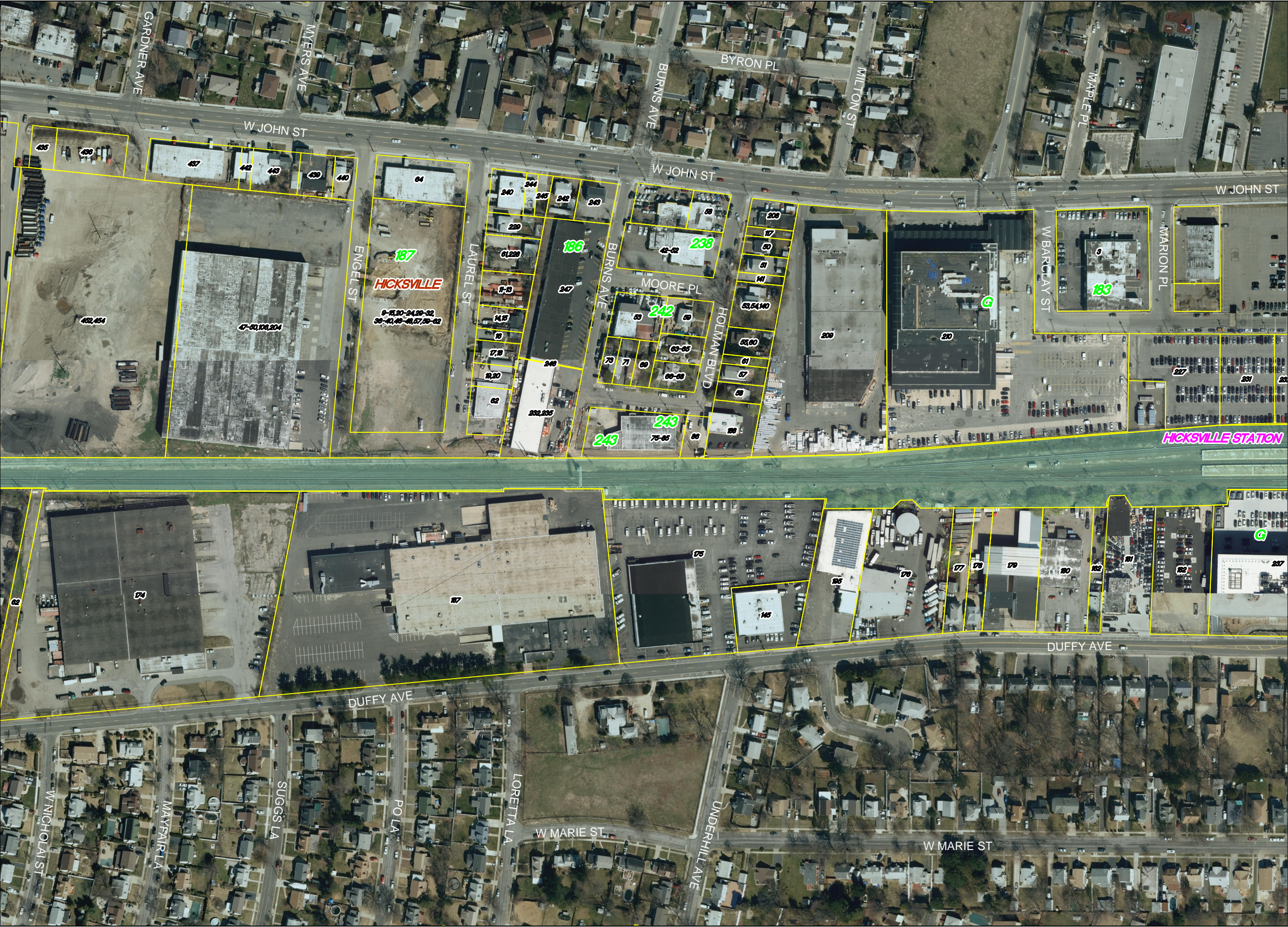
SCALE: 1"=200'



[illegible]

A map of the study area showing the coastline of the Gulf of Mexico. A red dot marks the location of the study site, labeled 'Rio Bravo'. An arrow points from the text 'Rio Bravo' to the red dot. The map shows the coastline of the Gulf of Mexico, with the Rio Grande (Rio Bravo) flowing into the Gulf. The land area is shown in light blue, and the water area is shown in light green. The map is oriented with North at the top.





Long Island Rail Road

LIRR Expansion Project From
Floral Park to Hicksville

Hicksville

Sheet 19 of 20

August 25, 2016

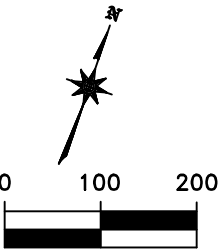


ENLARGED AREA



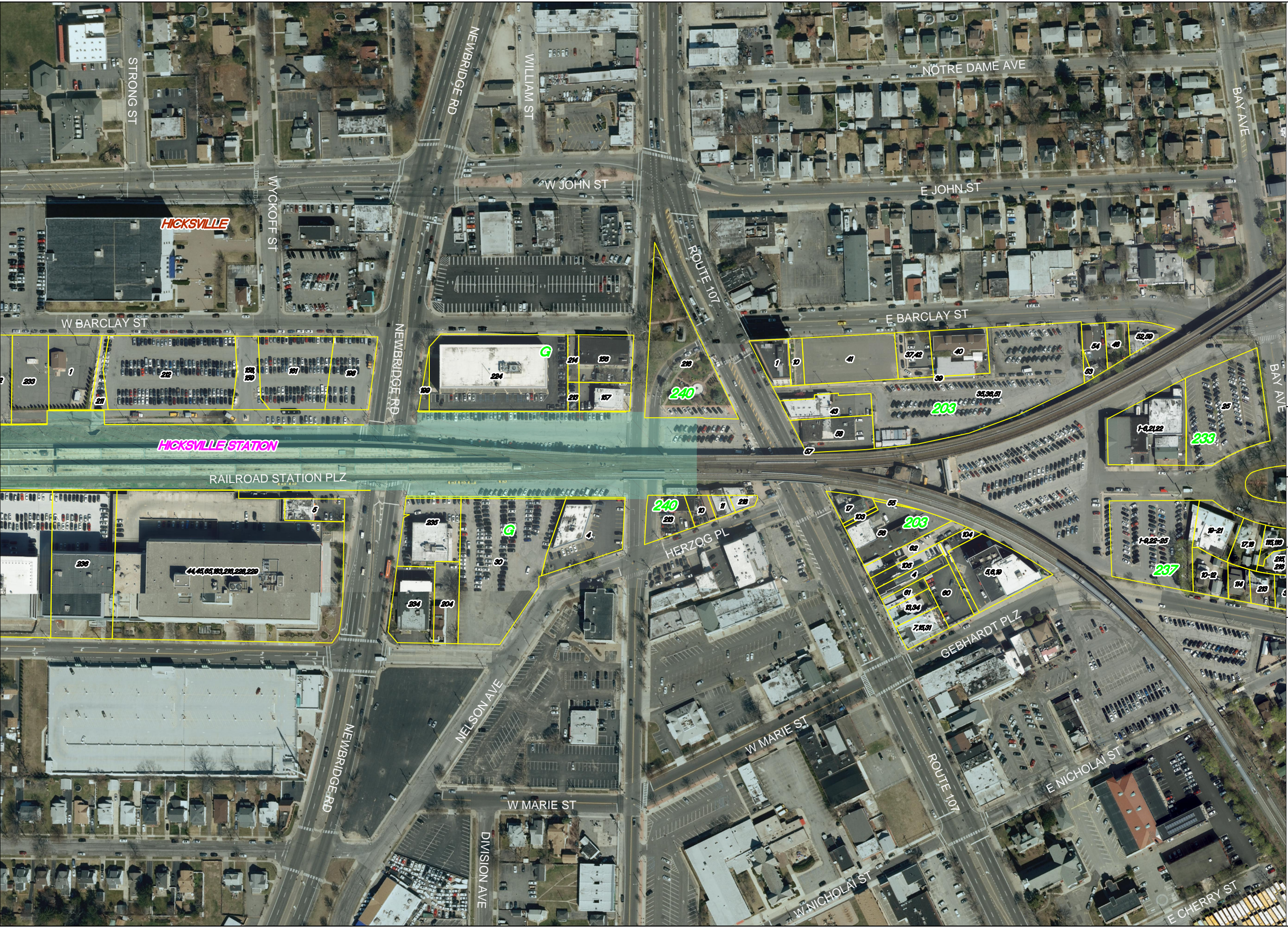
Source:
Aerial Photography - flown in April 2016 -
bandwidth of 500' on either side of the Long
Island Rail Road. Merged with New York State
Digital Orthoimagery Program flown in 2013

Parcels - Nassau County Department of
Assessment and Nassau County GIS



SCALE: 1"=200'





Long Island Rail Road

LIRR Expansion Project From
Floral Park to Hicksville
Hicksville

Sheet 20 of 20

August 25, 2016

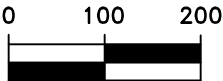
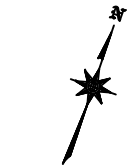


ENLARGED AREA



Source:
Aerial Photography - flown in April 2016 -
bandwidth of 500' on either side of the Long
Island Rail Road. Merged with New York State
Digital Orthoimagery Program flown in 2013

Parcels - Nassau County Department of
Assessment and Nassau County GIS



SCALE: 1"=200'

