

**PROJECT BENEFITS**

# Station Improvements & Parking Fact Sheet



New Hyde Park Station – Modern Aesthetic



Merillon Avenue Station – Traditional Aesthetic

## Station Improvements & Modifications

The Proposed Project will include various station improvements and modifications in order to:

- Accommodate the Third Track
- Improve Platforms and Passenger Waiting Areas
- Improve Lighting, Landscaping and Other Visual Elements
- Enhance Pedestrian Access
- Enhance ADA Accessibility

One major improvement that will facilitate better service will be the lengthening of some station platforms, to allow passengers to disembark from 12-car trains without moving to the front of a train – a practice that holds trains up at stations every day.

Project officials are seeking community input on two general station types; a modern design and a more traditional “Heritage” design.

## New Parking Facilities

Extensive consultation with local elected officials along the project area has led to project proposals to add parking capacity throughout the project corridor, including new parking at Mineola, Westbury, and Hicksville Stations.

For full detailed information on the station and parking facilities modifications, see the Draft Environmental Impact Statement available on the project website, [www.aModernLI.com](http://www.aModernLI.com).

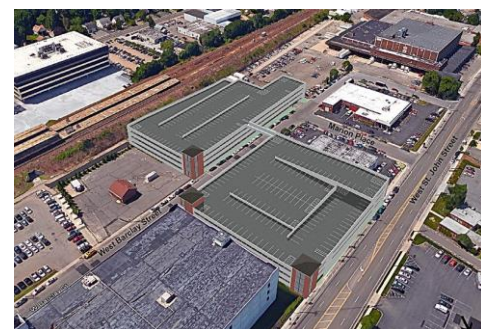
## PROPOSED PARKING FACILITIES RENDERINGS



Mineola Blvd. Parking Garage



Westbury Parking Garage



Hicksville Parking Garage