



**LIRR'S 100 Projects:
Transformation for**

And Long Islanders

Modernizing Long Island



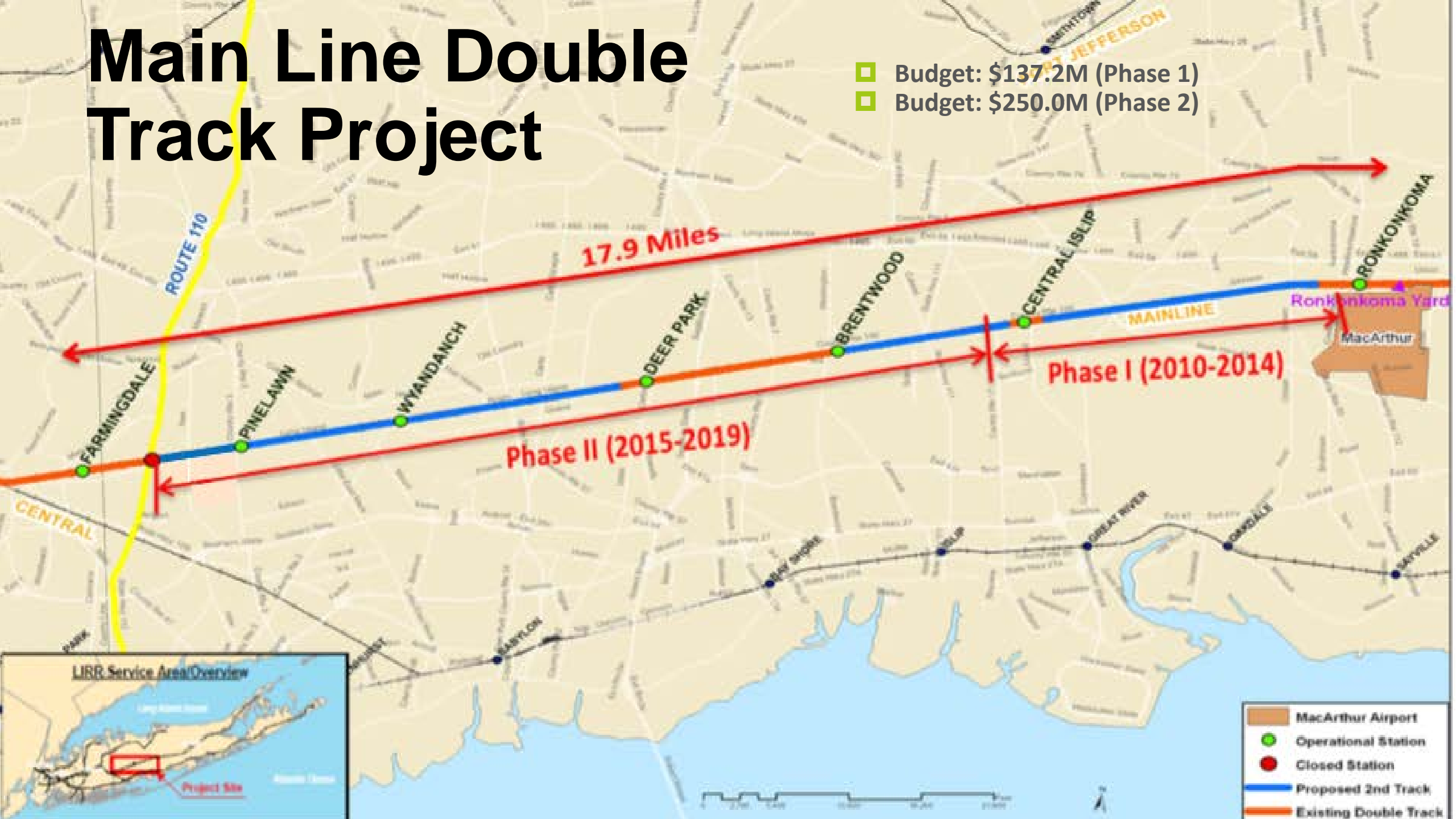
East Side
Access

LIRR
Expansion

Double
Track

Main Line Double Track Project

- Budget: \$137.2M (Phase 1)
- Budget: \$250.0M (Phase 2)





Main Line Double Track Project

Long Island Leadership

Project Need



Today, approximately **40%** of LIRR riders travel along this segment of the Main Line

Current Conditions

From 2013 through 2016

127 Main Line incidents

4,354 late or canceled trains

Millions of LIRR customers affected

Current Conditions (cont.)

SAFETY

24 deaths at 7 Main Line grade crossings since 1980

138 vehicles strikes at grade crossing gates in 2015

20 Main Line bridge strikes in 2016

LIRR Expansion Project Components

Project Components by the Numbers

■	Grade Crossings	7
■	Bridges	7
■	Stations	6
■	ADA Elevators	13
■	Substations	7
■	Interlocking Reconstructions	2
■	Retaining/Sound Walls	7.5 miles
■	Pedestrian Overpasses	6
■	Track	9.8 miles

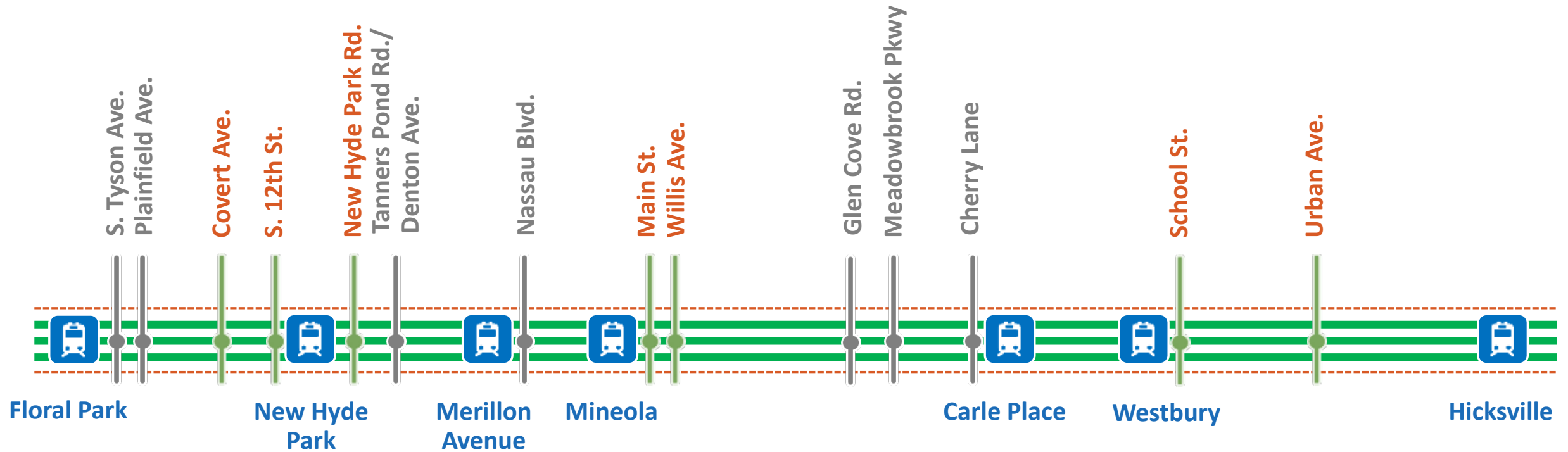
Community Commitments



Construction will include **environmental controls** to minimize dust, noise, and other community disruptions



LIRR Expansion Project From Floral Park to Hicksville



**9.8-mile Main Line segment from Floral Park to Hicksville
(Orange lines denote grade crossings to be eliminated)**

What's Going on Now

- Design Completion
- Utility Relocations
- Surveying
- Mobilization
- Community Outreach
- Retaining Walls
- Station Work





East Side Access

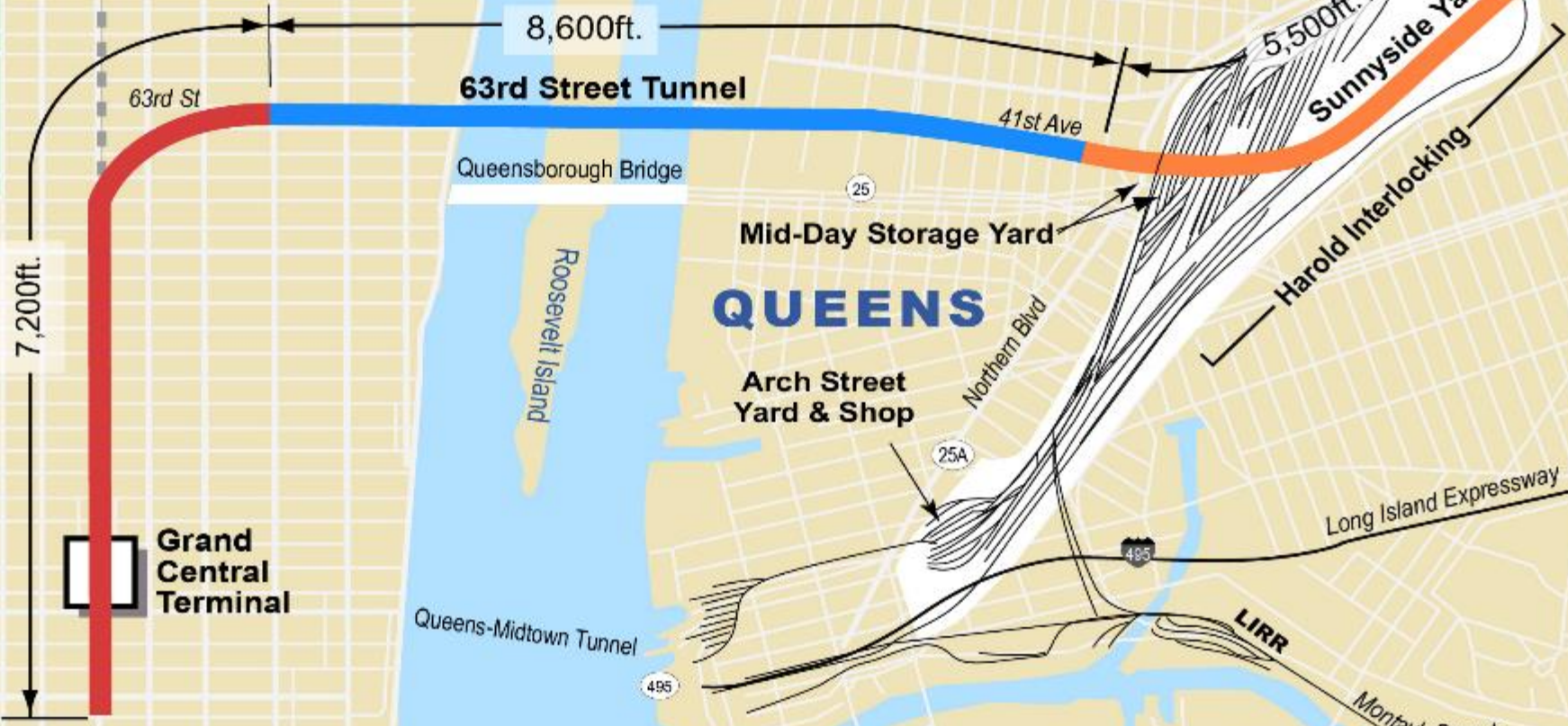
MANHATTAN

QUEENS

BROOKLYN

Central Park

Metro-North Railroad



Penn Station



9th Ave
8th Ave
7th Ave
6th Ave
5th Ave
Madison Ave.
Park Ave.
Lexington Ave.
3rd Ave.
2nd Ave.

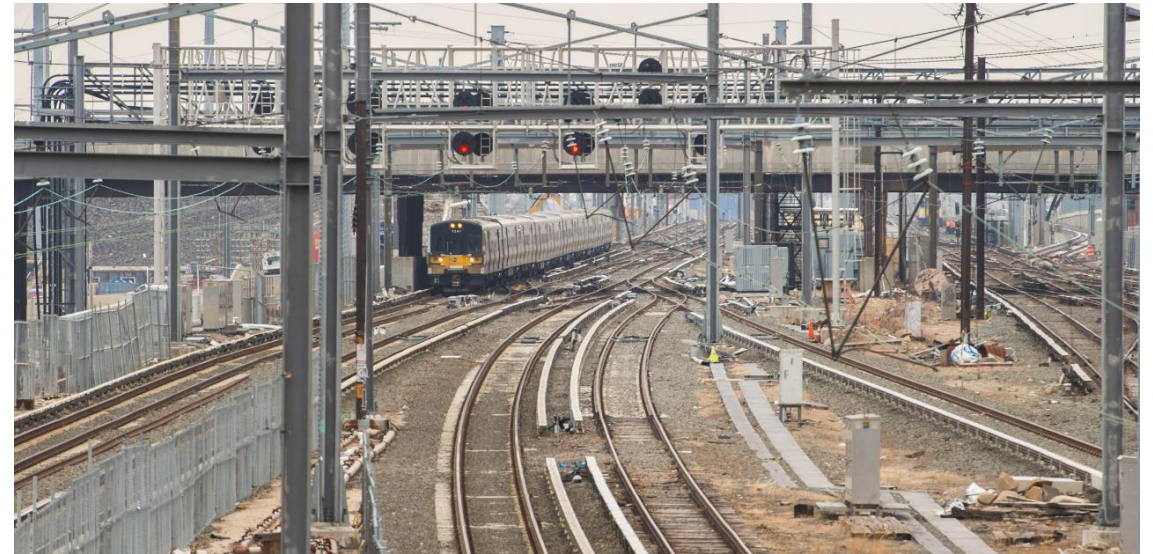
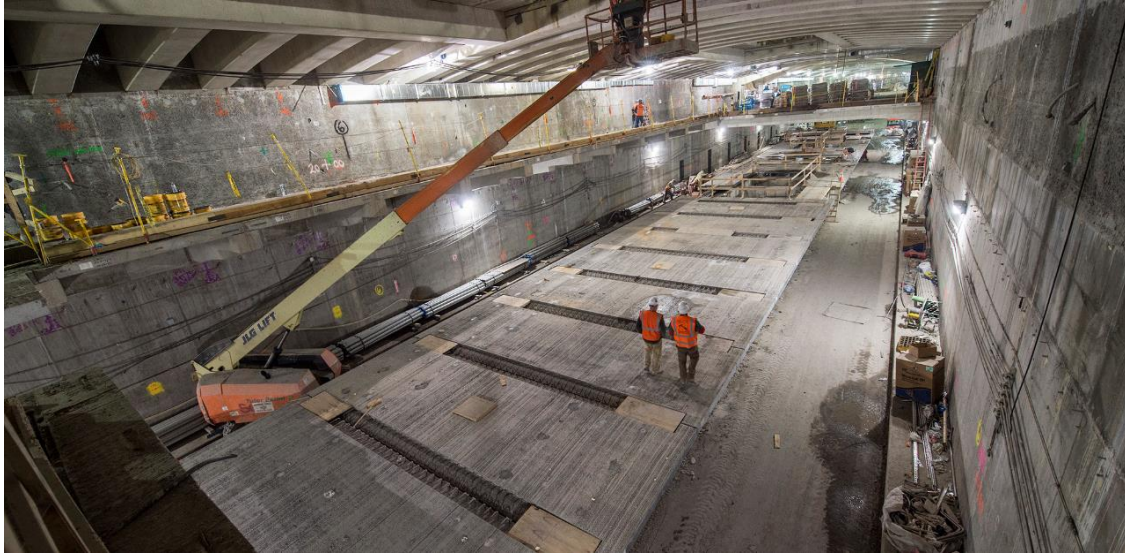
Legend

- Existing LIRR Tunnel Structure
- Manhattan - 8 Tunnels Excavated
- Queens - 4 Tunnels Excavated



What Does East Side Access mean for New York City, Long Island, and the Region?

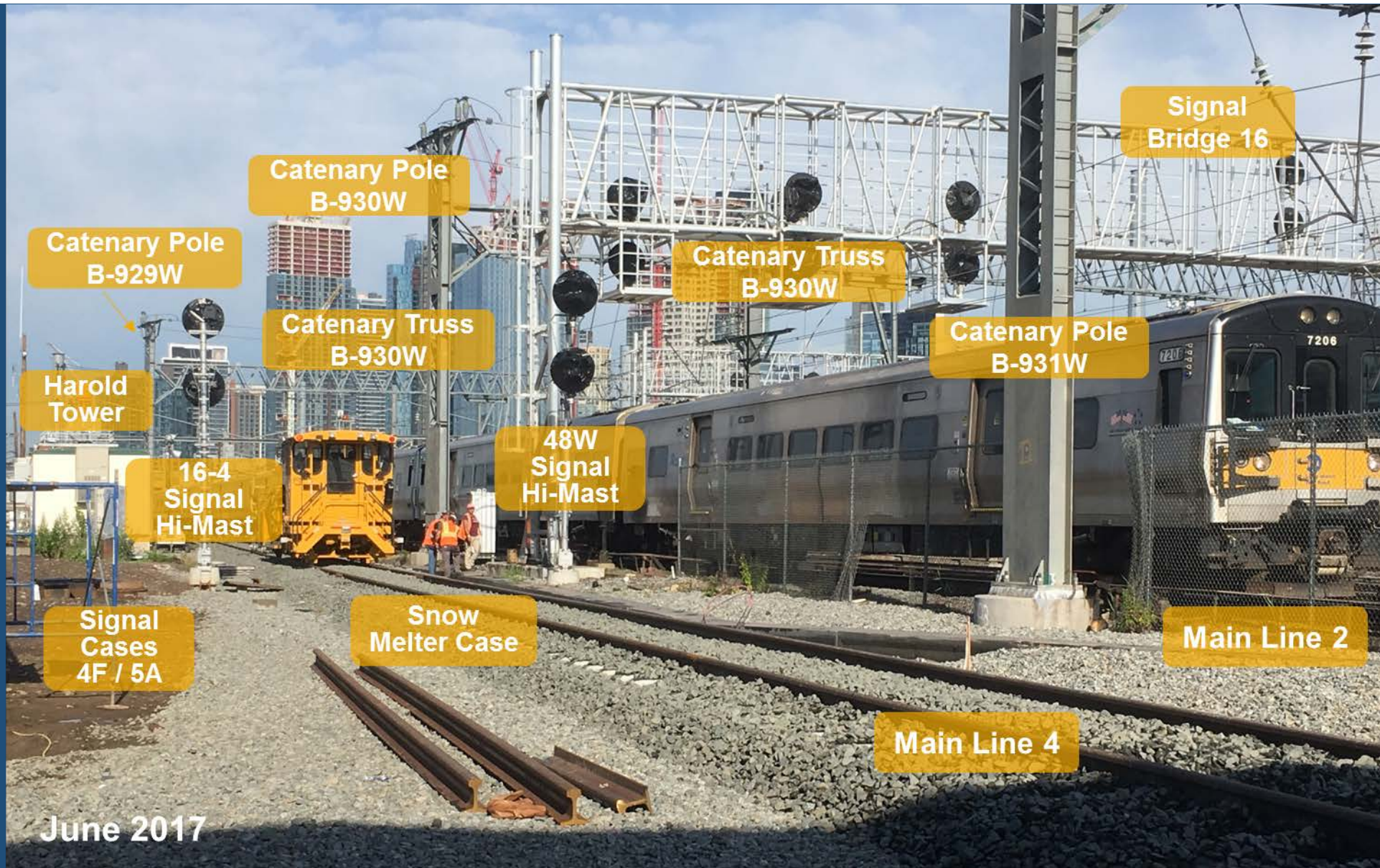
Progress



Modernization of Harold Interlocking



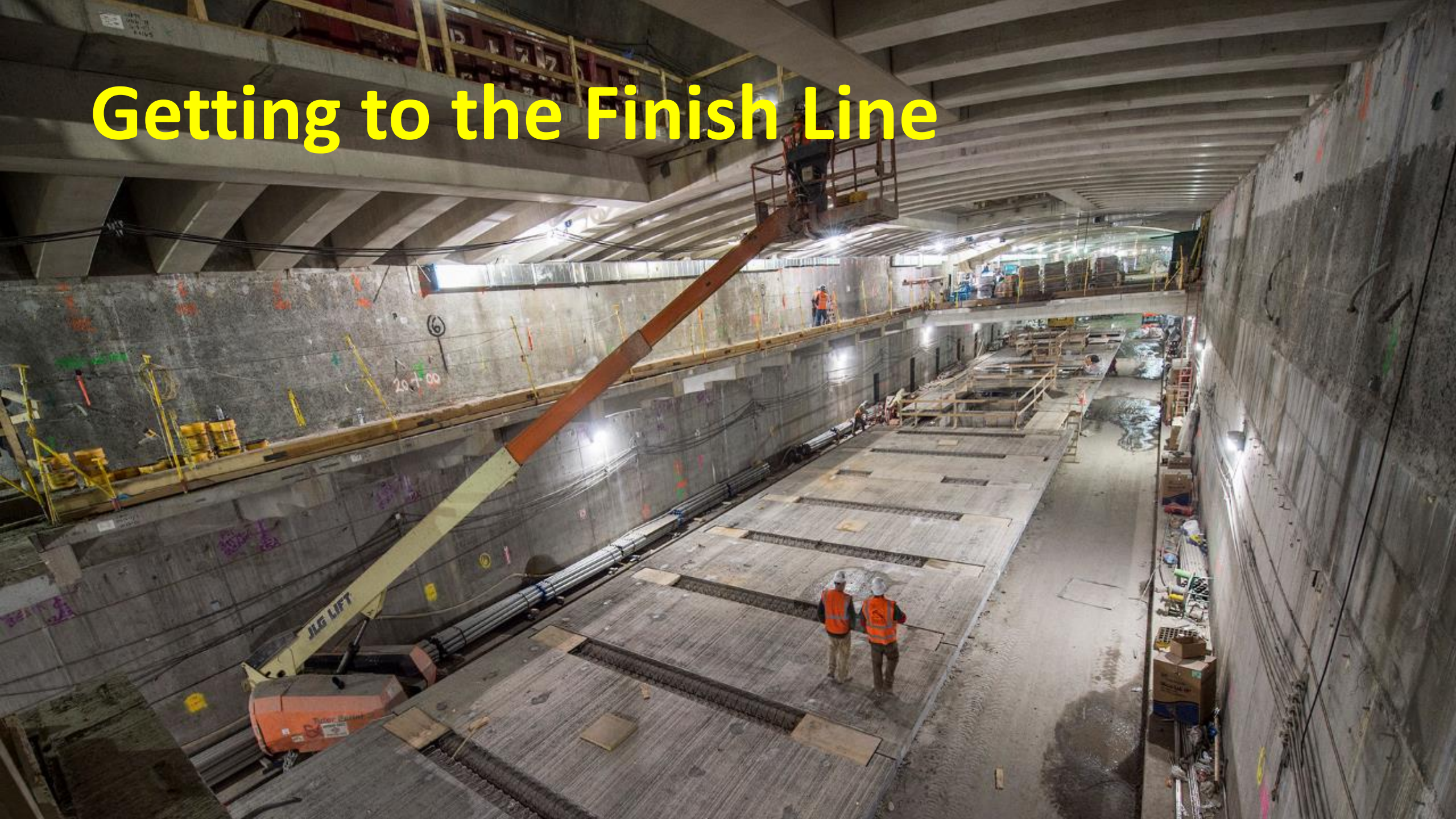
Modernization of Harold Interlocking



Schedule and Budget

- **Schedule for December 2022 revenue Service date maintained**
- **Revised Budget: \$11.1 billion**
- **Increase: \$955 million**

Getting to the Finish Line





A Modern LI

AModernLI.com

